

QUALITY
DURABILITY
TRADITION

WIRE & CABLE TERMINATION

There With YouSM
faster • safer • easier

“They’re doing it right.
Everybody uses Greenlee.”

JOE SCHROEDER
Apprentice Electrician



From battery to ratchet, if it needs to be cut or crimped, Greenlee's got the tool.

- A Greenlee exclusive—the Gator-Plus™ battery-powered 4-ton crimping tool brings tons of power in a small easy to use package
- Greenlee now offers the EK210 terminal Gator-Plus™ crimping tool—a unique battery-powered tool to crimp terminals featuring a design that reduces repetitive motion injuries
- High Performance Ratchet Cable Cutter—advanced features with automatic opening and two-speed advance
- Greenlee's own CCX easy changeover reduces the number of tools that need to be carried to the job, allowing you to cut, strip or crimp with a flip open head



**EK210 Gator-Plus™
Terminal Crimping
Tool**



**774 High
Performance
Ratchet Cable
Cutter**

What Is CCX?

The Greenlee CCX three-step, 10-second function changeover.

The easy, quick-release design makes changeovers this simple:



1

Just push the release buttons, and the blades slide right out of the easy-opening CCX head.



2

Alternate die adapters, cutter blades, or knockout punch adapters slide right in!



3

You're working again, with no lost time!

CCX-Exclusive Multipurpose Tools from Greenlee

Get more for your money and carry fewer tools – with CCX. This advanced line of multipurpose tools is designed to work with a wide variety of cutting blades and crimping die adapters, and a knockout punch adapter. Buy just one tool for countless electrical construction and maintenance jobs.

Cut

- Copper, aluminum, copperweld, and ACSR cable
- Guy strand, including EHS
- Threaded rod
- DIN rail

Crimp – with any six-ton die type

- Greenlee K22 & KA22
- Thomas & Betts 6Ton
- Burndy W
- Blackburn OD
- Kearney O
- Panduit CD2001
- For copper lugs and splices, use Greenlee dies up to 600 kcmil (MCM).
For aluminum lugs & splices, use Greenlee dies up to 350 kcmil (MCM).*

Punch – use the knockout punch adapter with

- Standard Slug-Buster and Slug-Splitter punches
- Non-round punches

*UL classified and CSA certified to 600 kcmil (MCM) with Anderson, Blackburn®, Burndy, ILSCO, Panduit, Thomas & Betts, and Penn-Union copper color-coded connectors. UL & CUL classified to 350 kcmil (MCM) with Anderson, Blackburn®, Burndy, ILSCO, Panduit, Thomas & Betts, and Penn-Union aluminum color-coded connectors.

Gator-Pro™ ECCX



- Nickel-metal hydride battery (Ni-MH) delivers up to 140 cycles per charge.
- 360° rotating head adjusts to your work position.
- Lightweight, plus ergonomic-angled handle for comfortable, low-stress use.
- Cycles in seconds with two-speed hydraulic pump, maximizing productivity.
- Automatic retraction when crimping and cutting cycles are complete.
- Uses all optional CCX blades and adapters (see page 145).
- Includes two batteries, a choice of either a 120V, 12V or 230V one-hour charger, and a high-impact molded carrying case.
- U.S. Patent #6,206,663 and Patent Pending.

CAT. NO.	UPC NO.	DESCRIPTION
ECCX11	07028	Battery-powered CCX tool, 120 V charger
ECCX12	07029	Battery-powered CCX tool, 12 V charger
ECCX22	07030	Battery-powered CCX tool, 230 V charger

Crimping dies on page 170.

SPECIFICATIONS

Crimping Force	12,000 lb. (53 kN)
Length	14-3/4" (375 mm)
Height	12-1/8" (308 mm)
Weight	10.5 lbs. (4.8 kg)
Battery	12 Volt, 2.2 Ah, Ni-MH
Battery Charge Time	1 hour

Gator-Pro™ CCCX Corded Tools



- Operates directly from 120 volt or 230 volt 50 Hz electrical outlets. No need to charge batteries or worry about running out of power.
- Equipped with 15 foot (5 m) cord. Can be used with extension cords.
- 360° rotating head adjusts to your work position.
- Lightweight, plus ergonomic-angled handle for comfortable, low-stress use.
- Cycles in seconds with two-speed hydraulic pump, maximizing productivity.
- Automatic retraction when crimping and cutting cycles are complete.
- Uses all optional CCX blades and adapters (see page 145).
- Includes a high-impact molded carrying case.
- U.S. Patent #6,206,663 and Patent Pending.

CAT. NO.	UPC NO.	DESCRIPTION
CCCX11	01394	Corded CCX Tool, 120 V
CCCX22	01395	Corded CCX Tool, 230 V

Crimping dies on page 170.

SPECIFICATIONS

Crimping Force	12,000 lb. (53 kN)	Height	12-1/8" (308 mm)
Length	14-3/4" (375 mm)	Weight	10.5 lbs. (4.8 kg)
Operating Voltage	120 volts, 60 cycle AC (CCCX11); 230 volts, 60 cycle AC (CCCX22)		

HCCX Hand-Powered Hydraulic Tool



- 360° rotating head – comfortable to use at any jobsite.
- Lightweight, compact size makes it easy to carry and easy to use.
- Two-speed hydraulic pump for short cycle time.
- Automatic retraction when crimping and cutting cycles are complete.
- Includes a steel carrying case with spaces for blades and adapters.
- Uses all optional CCX blades and adapters (see page 145).
- U.S. Patent #6,206,663 and Patent Pending.

CAT. NO.	UPC NO.	DESCRIPTION
HCCX	07066	Hand-hydraulic CCX tool

Crimping dies on page 170.

SPECIFICATIONS

Crimping Force	12,000 lb. (53 kN)
Length	20-3/4" (527 mm)
Weight	8 lbs. (3.6 kg)

RCCX Remote-Powered Hydraulic Tool



- Operates with standard, 10,000 psi (700 bar) hydraulic pumps.
- 3/8" male screw-type coupler, operating pressure 10,000 psi.
- Includes a steel carrying case with spaces for blades and adapters.
- Uses all optional CCX blades and adapters (see page 145).
- Patent Pending.

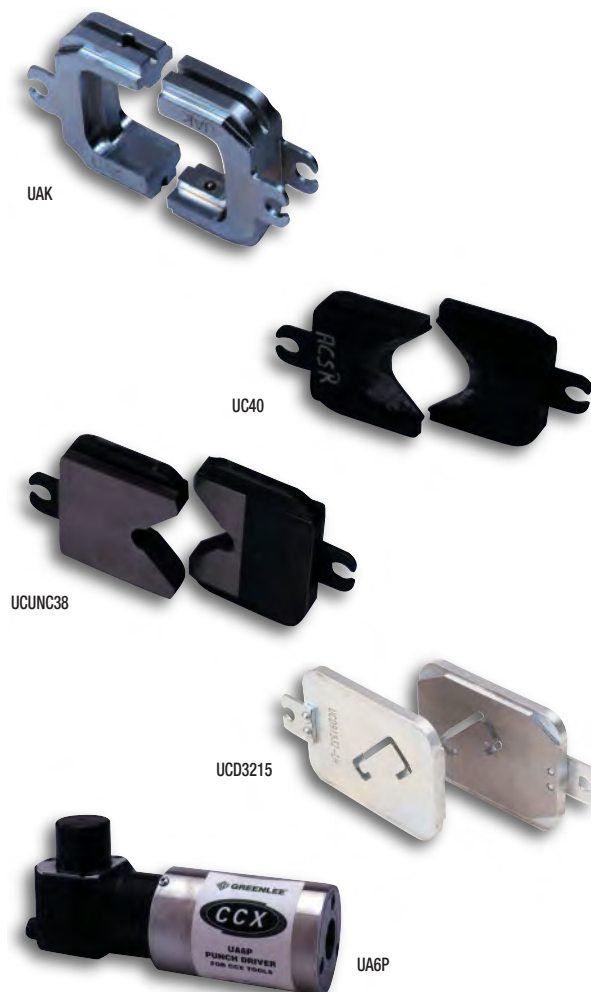
CAT. NO.	UPC NO.	DESCRIPTION
RCCX	07067	Remote-powered hydraulic CCX tool

Crimping dies on page 170.

SPECIFICATIONS

Crimping Force	12,000 lb. (53 kN)
Length	11-7/8" (302 mm)
Weight	5.2 lbs. (2.4 kg)
Hydraulic Couplers	3/8" Male screw-type
Max. Operating Pressures	10,000 psi (700 bar)

CCX Tool Accessories (optional, all in pairs except punch driver)



DIE ADAPTERS

UA22	07062	Adapter for Greenlee K22 dies
UAK	07033	Adapter for Kearney "0", T&B "6 Ton", and Blackburn "OD" dies
UAW	07035	Adapter for Burndy "W" and Panduit "CD-2001" dies (equivalent to "D ₃ " die)

CABLE CUTTING BLADES

UC26	06714	Cutter Blades AL & CU 1" capacity
UC40	07036	Cutter Blades AL & CU 1-1/2" capacity
UCACSR	07037	Cutter blades for ACSR & guy strand

THREADED ROD CUTTING BLADES

UCUNC14	07038	Cutter blades for 1/4" threaded rod
UCUNC38	07039	Cutter blades for 3/8" threaded rod
UCUNC12	07274	Cutter blades for 1/2" threaded rod
UCM5	07053	Cutter blades for M5 threaded rod
UCM6	07050	Cutter blades for M6 threaded rod
UCM8	07051	Cutter blades for M8 threaded rod
UCM10	07052	Cutter blades for M10 threaded rod

DIN RAIL CUTTING BLADES

UCD3575	07041	DIN rail cutter blades – 35 x 7.5
UCD3215	07042	DIN rail cutter blades – 32 x 15 x 9
UCD3515	07043	DIN rail cutter blades – 35 x 15
UPD6	01620	DIN Rail Punch (punches 15 mm x 6.2 mm hole in 35 x 7.5 and 35 x 15 DIN rail)

KNOCKOUT PUNCH ADAPTER

UA6P	07020	Punch Driver Adapter* (accepts 3/4" draw steel)
------	-------	---

* U.S. Patent #6, 065, 326

CCX Tool Capacities

CRIMPING	CUTTING	PUNCHING
Copper Color-Coded Lugs and Splices: 600 kcmil (MCM)	Copper and Aluminum Cable: 1-1/2" (40 mm)	Round: 2.42" (61.5 mm) in 10 ga. mild steel
Aluminum Color-Coded Lugs and Splices: 300 kcmil (MCM)	ACSR: 954 kcmil (MCM) (Cardinal)	
5/8" Service Entrance Connectors: #10-1/0	Standard Guy Strand: 5/8" (20 mm)	
.840 Service Entrance Connectors: 1/0-4/0	EHS Guy Strand: 1/2" (13 mm)	
Aluminum Overhead "H" taps: #6-4/0	Ground Rod: 1/2" (13 mm)	
One Piece ACSR Tension Splices: #4-1/0	Rebar (schedule 60): 1/2" (13 mm)	
Two Piece ACSR Tension Splices: #2-4/0	Threaded Rod: 1/4", 3/8", 1/2", 4 mm, 5 mm, 6 mm, 8 mm, 10 mm	
	DIN Rail: 35 x 7.5, 32 x 15 x 9, 35 x 15	

Cable Cutter Selection Guide

CABLE SIZE

AWG	#8	#6	#4	#2	#1	1/0	2/0	3/0	4/0	250 kcmil	300 kcmil	350 kcmil	400 kcmil	500 kcmil	600 kcmil	750 kcmil	1000 kcmil	1500 kcmil	2000 kcmil	Page
mm ²	6	10	16	25	35	40	50	70	95	120	150	150	185	240	300	400	500	800	1000	No.

BATTERY-POWERED & CORDED

ECCX, CCCX	Al	•	•	•	•	•	•	•	•	•	•	•	•	•	•	•	•			143, 144
	Cu	•	•	•	•	•	•	•	•	•	•	•	•	•	•	•	•			
	ACSR	•	•	•	•	•	•	•	•	•	•	•	•	•	•	•	•			
ES750	Al	•	•	•	•	•	•	•	•	•	•	•	•	•	•	•	•			147
	Cu	•	•	•	•	•	•	•	•	•	•	•	•	•	•	•	•			
ESG50GL, CSG50GL	Al	•	•	•	•	•	•	•	•	•	•	•	•	•	•	•	•	•	•	147
	Cu	•	•	•	•	•	•	•	•	•	•	•	•	•	•	•	•	•	•	
ESG85GL	Al	•	•	•	•	•	•	•	•	•	•	•	•	•	•	•	•	•	•	148
	Cu	•	•	•	•	•	•	•	•	•	•	•	•	•	•	•	•	•	•	
ESG45GL*, CSG45GL*	Al	•	•	•	•	•	•	•	•	•	•	•	•	•	•	•	•	•	•	149
	Cu	•	•	•	•	•	•	•	•	•	•	•	•	•	•	•	•	•	•	
	ACSR	•	•	•	•	•	•	•	•	•	•	•	•	•	•	•	•	•	•	

HYDRAULIC-TYPE

RCCX	Al	•	•	•	•	•	•	•	•	•	•	•	•	•	•	•	•			144
	Cu	•	•	•	•	•	•	•	•	•	•	•	•	•	•	•	•			
	ACSR	•	•	•	•	•	•	•	•	•	•	•	•	•	•	•	•			
HCCX	Al	•	•	•	•	•	•	•	•	•	•	•	•	•	•	•	•			144
	Cu	•	•	•	•	•	•	•	•	•	•	•	•	•	•	•	•			
	ACSR	•	•	•	•	•	•	•	•	•	•	•	•	•	•	•	•			
HK520*	Al	•	•	•	•	•	•	•	•	•	•	•	•	•	•	•	•			150
	Cu	•	•	•	•	•	•	•	•	•	•	•	•	•	•	•	•			
	ACSR	•	•	•	•	•	•	•	•	•	•	•	•	•	•	•	•			
750	Al	•	•	•	•	•	•	•	•	•	•	•	•	•	•	•	•			150
	Cu	•	•	•	•	•	•	•	•	•	•	•	•	•	•	•	•			

RATCHET-TYPE

759	Al	•	•	•	•	•	•	•	•	•	•	•	•	•	•	•	•			151
	Cu	•	•	•	•	•	•	•	•	•	•	•	•	•	•	•	•			
760, 761	Al	•	•	•	•	•	•	•	•	•	•	•	•	•	•	•	•			151
	Cu	•	•	•	•	•	•	•	•	•	•	•	•	•	•	•	•			
45206	Al	•	•	•	•	•	•	•	•	•	•	•	•	•	•	•	•			152
	Cu	•	•	•	•	•	•	•	•	•	•	•	•	•	•	•	•			
45207	Al	•	•	•	•	•	•	•	•	•	•	•	•	•	•	•	•			152
	Cu	•	•	•	•	•	•	•	•	•	•	•	•	•	•	•	•			
763, 773	Al	•	•	•	•	•	•	•	•	•	•	•	•	•	•	•	•			153
	Cu	•	•	•	•	•	•	•	•	•	•	•	•	•	•	•	•			
764, 774	Al	•	•	•	•	•	•	•	•	•	•	•	•	•	•	•	•			153
	Cu	•	•	•	•	•	•	•	•	•	•	•	•	•	•	•	•			
756	Al	•	•	•	•	•	•	•	•	•	•	•	•	•	•	•	•			153
	Cu	•	•	•	•	•	•	•	•	•	•	•	•	•	•	•	•			
757*	ACSR	•	•	•	•	•	•	•	•	•	•	•	•	•	•	•	•			154

MANUAL

727	Al	•	•	•	•	•	•	•	•	•	•	•	•	•	•	•	•			156
	Cu	•	•	•	•	•	•	•	•	•	•	•	•	•	•	•	•			
718, 718F	Al	•	•	•	•	•	•	•	•	•	•	•	•	•	•	•	•			155, 156
	Cu	•	•	•	•	•	•	•	•	•	•	•	•	•	•	•	•			
704	Al	•	•	•	•	•	•	•	•	•	•	•	•	•	•	•	•			155
	Cu	•	•	•	•	•	•	•	•	•	•	•	•	•	•	•	•			
705	Al	•	•	•	•	•	•	•	•	•	•	•	•	•	•	•	•			155
	Cu	•	•	•	•	•	•	•	•	•	•	•	•	•	•	•	•			
706	Al	•	•	•	•	•	•	•	•	•	•	•	•	•	•	•	•			155
	Cu	•	•	•	•	•	•	•	•	•	•	•	•	•	•	•	•			
749	Al	•	•	•	•	•	•	•	•	•	•	•	•	•	•	•	•			156
	Cu	•	•	•	•	•	•	•	•	•	•	•	•	•	•	•	•			
	ACSR	•	•	•	•	•	•	•	•	•	•	•	•	•	•	•	•			

* 757, HK520, and ESG45GL cut additional types of material. Refer to product information on the following pages for more detail.

NOTE: • = Frequent use capacity. o = Maximum capacity

Gator™ ES750 Battery-Powered Cable Cutter



- Cuts 500 kcmil (MCM) copper cable in under 8 seconds.
- Compact design permits use in tight locations.
- Extra heavy blades for clean cuts and long life.
- Makes approximately 20 cuts in 750 kcmil (MCM) per battery charge.
- Easy to switch between forward and reverse direction.
- 12 volt battery recharges in one hour.
- Includes battery charger, one battery and molded carrying case.
- Choice of a 120 volt or 230 volt battery charger.

CAT. NO.	UPC NO.	DESCRIPTION
ES750-11	45380	Battery-Powered Cable Cutter, 120 V Charger
ES750-22	45381	Battery-Powered Cable Cutter, 230 V Charger
45378	45378	Extra 12 Volt Battery

SPECIFICATIONS

Cutting Capacity	750 kcmil (MCM) (400 mm ²) copper cable, 1000 kcmil (MCM) (500 mm ²) aluminum cable
Length	14-1/4" (362 mm)
Weight	5.8 lbs. (2.6 kg)
Battery	12 Volts NiCd

Gator-Plus™ Battery-Powered Cable Cutters



- Ram automatically retracts after the cut is complete. No need to push a retract lever. Tool is automatically ready to perform the next cut.
- Two-speed pump advances the ram quickly to start the cut.
- Cutting blades are specially hardened and precision ground to hold their sharpness.
- Lightweight and easy to use.
- Cutting head rotates 360° for making cuts in tight locations, and flips open to make mid-span cuts easy.
- Includes one-hour battery charger, steel carrying case and two batteries.
- Choice of a 120 volt, 230 volt, or 12 volt battery charger.
- U.S. Patent #6,206,663.

CAT. NO.	UPC NO.	DESCRIPTION
ESG50GL11	03554	Battery-Powered Cable Cutter, 120 V Charger
ESG50GL12	03555	Battery-Powered Cable Cutter, 12 V Charger
ESG50GL22	03556	Battery-Powered Cable Cutter, 230 V Charger

SPECIFICATIONS

Cutting Capacity	2" (50 mm) diameter Al or Cu cable
Length	15-3/4" (400 mm)
Weight	10 lbs. (4.5 kg)
Height	14-1/4" (362 mm)
Battery	12 Volt 2.0 Ah NiCd
Battery charge time	1 hour

Gator-Plus™ Corded Cable Cutters



- Operates directly from 120 volt or 230 volt 50 Hz electrical outlets. No need to charge batteries or worry about running out of power.
- Equipped with 15 foot (5 m) cord. Can be used with extension cords.
- Ram automatically retracts after the cut is complete. No need to push a retract lever. Tool is automatically ready to perform the next cut.
- Two-speed pump advances the ram quickly to start the cut.
- Cutting blades are specially hardened and precision ground to hold their sharpness.
- Lightweight and easy to use.
- Cutting head rotates 360° for making cuts in tight locations, and flips open to make mid-span cuts easy.
- Includes steel carrying case.
- U.S. Patent #6,206,663.

CAT. NO.	UPC NO.	DESCRIPTION
CSG50GL11	01384	Corded Cable Cutter, 120 V
CSG50GL22	01385	Corded Cable Cutter, 230 V

SPECIFICATIONS

Cutting Capacity	2" (50 mm) diameter Al or Cu cable
Length	15-3/4" (400 mm)
Weight	10 lbs. (4.5 kg)
Height	14-1/4" (362 mm)

Gator-Plus™ ESG85GL Battery-Powered Cable Cutters



- Two-speed pump advances the ram quickly to start the cut.
- Cutting blades are specially hardened and precision ground to hold their sharpness.
- Cutting head rotates 360° for making cuts in tight locations, and flips open to make mid-span cuts easy.
- Includes one-hour battery charger, steel carrying case and two batteries.
- Choice of a 120 volt, 230 volt, or 12 volt battery charger.
- U.S. Patent #6,206,663.

CAT. NO.	UPC NO.	DESCRIPTION
ESG85GL11	06761	Battery-Powered Cable Cutter, 120 V Charger
ESG85GL12	06762	Battery-Powered Cable Cutter, 12 V Charger
ESG85GL22	06763	Battery-Powered Cable Cutter, 230 V Charger

SPECIFICATIONS

Length	19-1/4" (489 mm)
Height	12-7/8" (327 mm)
Weight	16.4 lbs. (7.4 kg)
Battery	12 volt 2.0 Ah NiCd
Battery Charge Time	1 hour
Capacity	Communications Cable: 3.3" diameter (85 mm diameter)
	Lead sheathed telephone cable: 3.3" diameter (85 mm diameter)
	Copper cable: 3.3" diameter (85 mm diameter)
	Aluminum cable: 3.3" diameter (85 mm diameter)

Gator-Plus™ ESG45GL Battery-Powered Cable, ACSR & Guy Wire Cutters



- The ram automatically retracts after the cut is complete to ready the tool for the next cut.
- The two-speed pump advances the ram rapidly to start the cut reducing cycle time.
- Cutting head rotates 360° for making cuts in tight locations, and flips open to make mid-span cuts easy.
- Includes one-hour battery charger, steel carrying case and two batteries.
- Choice of a 120 volt, 230 volt, or 12 volt battery charger.

CAT. NO.	UPC NO.	DESCRIPTION
ESG45GL11	10412	Battery-Powered ACSR Cable Cutter, 120 V Charger
ESG45GL12	10413	Battery-Powered ACSR Cable Cutter, 12 V Charger
ESG45GL22	10414	Battery-Powered ACSR Cable Cutter, 230 V Charger

SPECIFICATIONS

Length	15-1/2" (394 mm)
Height	12-1/2" (318 mm)
Weight	12.8 lbs. (5.8 kg)
Battery	12 volt 2.0 Ah NiCd
Battery Charge Time	1 hour

Capacity

ACSR:	1590 kcmil (MCM), (Falcon 54/19)
Standard Guy Strand:	5/8" diameter (16 mm diameter)
EHS Guy Strand:	1/2" diameter (13 mm diameter)
Ground Rod:	5/8" diameter (16 mm diameter)
Rebar (schedule 60):	1/2" diameter (13 mm diameter)
Wire Rope:	5/8" diameter (16 mm diameter)
Copper and Aluminum Cable:	1500 kcmil (MCM) (800 mm ²)
Soft Steel Bolts:	5/8" diameter (16 mm diameter)

Gator-Plus™ CSG45GL Corded Cable, ACSR & Guy Wire Cutters



- Operates directly from 120 volt or 230 volt 50 Hz electrical outlets. No need to charge batteries or worry about running out of power.
- Equipped with 15 foot (5 m) cord. Can be used with extension cords.
- The ram automatically retracts after the cut is complete to ready the tool for the next cut.
- The two-speed pump advances the ram rapidly to start the cut reducing cycle time.
- Cutting head rotates 360° for making cuts in tight locations, and flips open to make mid-span cuts easy.
- Includes steel carrying case.

CAT. NO.	UPC NO.	DESCRIPTION
CSG45GL11	01382	Corded ACSR Cable Cutter, 120 V
CSG45GL22	01383	Corded ACSR Cable Cutter, 230 V

SPECIFICATIONS

Length	15-1/2" (394 mm)
Height	12-1/2" (318 mm)
Weight	12.8 lbs. (5.8 kg)

Capacity

ACSR:	1590 kcmil (MCM), (Falcon 54/19)
Standard Guy Strand:	5/8" diameter (16 mm diameter)
EHS Guy Strand:	1/2" diameter (13 mm diameter)
Ground Rod:	5/8" diameter (16 mm diameter)
Rebar (schedule 60):	1/2" diameter (13 mm diameter)
Wire Rope:	5/8" diameter (16 mm diameter)
Copper and Aluminum Cable:	1500 kcmil (MCM) (800 mm ²)
Soft Steel Bolts:	5/8" diameter (16 mm diameter)

Hydraulic Cable Cutter Sets

750H767 model with
767 Hand Pump



SPECIFICATIONS

Capacity	1000 kcmil (MCM) (500 mm ²) copper or aluminum cable		
Jaw opening	1-15/16" (49 mm)		
Weight	750 – 25 lbs. (11.3 kg)	750F1725 – 40 lbs. (18.1 kg)	
	750H767 – 29 lbs. (13.2 kg)	750E975 – 84 lbs. (38.1 kg)	

- Cuts in 7 seconds. Jaws slide open quickly to save time between cuts.
- 11-ton (97 kN) ram powers cutting jaws. Jaws are specially hardened and precision ground to hold sharpness.
- Lightweight and easy to use.

CAT. NO.	UPC NO.	DESCRIPTION
750	29149	Hydraulic Cable Cutter & Ram in Storage Box
750H767	17450	Hydraulic Cable Cutter with 767 Hand Pump, Ram, Hydraulic Hose in Storage Box
750E975	34203	Hydraulic Cable Cutter with 975 Electric Pump, Ram, Hydraulic Hose in Storage Box
751	22279	Hydraulic Cable Cutter Head for use with Greenlee 746 Hydraulic Ram Also order 51385 Elbow (see below).
746C	17451	Ram Unit
23955	23955	Steel Storage Box
51385	51385	Elbow for 746 Ram
17459	17459	Replacement Cutter Blade

Hydraulic ACSR Cable Cutter



CAT. NO.	UPC NO.	DESCRIPTION
HK520	08031	Hydraulic ACSR Cable Cutter
00336	00336	Cutter Blade
00301	00301	Fixed Cutter Head

- Flip open head provides strength while making it easy to cut long lengths.
- Head rotates 180°.
- Thumb release lever for quick blade retraction.

SPECIFICATIONS

Capacity	Aluminum and Copper Cable, ACSR: 3/4" (19 mm) Standard Guy Wire, Ground Rod, Rebar: 1/2" (13 mm) Soft Steel Bolts: 11/16" (17 mm) Wire Rope: 3/4" (19 mm)
Length	14.5" (368 mm)
Weight	5.7 lbs. (2.6 kg)

Hydraulic Communications Cable Cutter Head



- Easily cuts large diameter communication cable and underground distribution cable.
- Swiveling handle allows for quick positioning for cuts.
- 3/8" male screw type coupler.
- See page 333 for hydraulic hose and pump selection.

CAT. NO.	UPC NO.	DESCRIPTION
SDK202GL	03137	Hydraulic Communications Cable Cutter Head

SPECIFICATIONS

Capacity	3-1/2" (90 mm) diameter Al or Cu cable
Weight	27.5 lb. (12.5 kg).
Length	18-7/8" (480 mm)
Maximum Operating Pressure	10,000 psi (700 bar)

Compact Ratchet Cable Cutters



- Simple, one-hand operation.
- Compact – convenient for working in tight places and stores easily in tool pouches.
- Single speed ratchet mechanism.
- Blade release allows blades to be opened in mid-cut.
- Heavy-duty blades provide long life.

CAT. NO.	UPC NO.	DESCRIPTION
759	45277	Compact Ratchet Cable Cutter
760	17600	Compact Ratchet Cable Cutter

SPECIFICATIONS

759

Capacity	Copper	Aluminum	Communications Cable
Maximum	500 kcmil (MCM) (240 mm ²)	750 kcmil (MCM) (400 mm ²)	1-1/8" dia. (28 mm ²)
Frequent Use	400 kcmil (MCM) (185 mm ²)	600 kcmil (MCM) (300 mm ²)	
Length 10-1/2" (262 mm)	Weight 1.4 lbs. (0.6 kg)		

760

Maximum	1000 kcmil (MCM) (500 mm ²)	1000 kcmil (MCM) (500 mm ²)	1-3/4" dia. (42 mm ²)
Frequent Use	750 kcmil (MCM) (400 mm ²)	1000 kcmil (MCM) (500 mm ²)	
Length 11-3/4" (298 mm)	Weight 1.75 lbs. (0.8 kg)		

Two-Hand Ratchet Cable Cutter



- Two-handed operation provides more leverage and makes cutting large cables easier.
- Short fiberglass handles make it easy to use in tight places and to store in tool boxes.
- Single speed ratchet mechanism.
- Blade release allows blades to be opened in mid-cut.
- Heavy duty forged steel blades provide long life.

CAT. NO.	UPC NO.	DESCRIPTION
761	11761	Two-Hand Ratchet Cable Cutter

SPECIFICATIONS

761

Capacity	Copper	Aluminum	Communications Cable
Maximum	750 kcmil (MCM) (400 mm ²)	1000 kcmil (MCM) (500 mm ²)	1-1/8" dia. (28 mm ²)
Length 10-3/4" (273 mm)	Weight 3.6 lbs. (1.6 kg)		

Performance Ratchet Cable Cutters



Both models feature:

- Simple, one-hand operation.
- Two-speed ratchet mechanism adjusts for light/heavy cutting.
- Well-suited for tight work spaces.
- Specially designed blade improves cutting capacity.

CAT. NO.	UPC NO.	DESCRIPTION	WEIGHT	
			LBS.	kg
45206	45206	Performance Ratchet Cable Cutter	1.5	.7
45207	45207	Performance Ratchet Cable Cutter	2.4	1.1

SPECIFICATIONS

Capacity	Copper	Aluminum	Communications Cable
45206			
Maximum	600 kcmil (MCM) (300 mm ²)	600 kcmil (MCM) (300 mm ²)	1-3/8" (35 mm) dia.
Frequent Use	500 kcmil (MCM) (240 mm ²)	500 kcmil (MCM) (240 mm ²)	
Length 10" (254 mm)	Jaw opening 1-7/16" (36.5 mm)		
45207			
Maximum	750 kcmil (MCM) (400 mm ²)	1000 kcmil (MCM) (500 mm ²)	2" (50 mm) dia.
Frequent Use	600 kcmil (MCM) (300 mm ²)	750 kcmil (MCM) (400 mm ²)	
Length 11" (279 mm)	Jaw opening 2" (50 mm)		

Telco Ratchet Cutter



This versatile cutter has a specially designed moving blade to handle the larger diameter telephone cable and soft drawn copper and aluminum.

- Cuts up to 2,700 pair telephone cable or up to 750 kcmil (MCM) (400 mm²) soft drawn copper and aluminum.
- Blade release for safety and fast backout.
- High carbon tool steel blades are heat treated for long life.
- Ratchet lock.
- Blades are manufactured from high carbon tool steel and heat-treated for long life.
- Rust-resistant, black oxide finish.

SPECIFICATIONS

Length	11-1/2" (287 mm)	Weight	2.8 lbs. (1.3 kg)
--------	------------------	--------	-------------------

CAT. NO.	UPC NO.	DESCRIPTION
45240	45240	Telco Ratchet Cutter
45241	45241	Movable Blade Replacement
45242	45242	Fixed Blade Replacement

Ratchet Cable Cutters



- High leverage for easier cutting.
- Anti-slip mechanism ensures positive ratcheting.
- One handle stationary while the other ratchets for use in deep boxes or against walls.
- Durable, lightweight fiberglass handles.

CAT. NO.	UPC NO.	DESCRIPTION
763	05542	Ratchet Cable Cutter, 13-3/4"
764	35516	Ratchet Cable Cutter, 19-1/8"
36037	36037	763, 764 Cutter Head Unit (2 Blades)

SPECIFICATIONS

Capacity	Copper	Aluminum	Communications Cable
763			
Maximum	500 kcmil (MCM) (240 mm ²)	795 kcmil (MCM) (400 mm ²)	1-3/16" dia.
Frequent Use	350 kcmil (MCM) (150 mm ²)	750 kcmil (MCM) (400 mm ²)	
Length 13-3/4" (349 mm);	Weight 4.8 lbs. (2.2 kg)		
764			
Maximum	750 kcmil (MCM) (400 mm ²)	795 kcmil (MCM) (400 mm ²)	1-3/16" dia.
Frequent Use	500 kcmil (MCM) (240 mm ²)	750 kcmil (MCM) (400 mm ²)	
Length 19-1/8" (486 mm)	Weight 5.3 lbs. (2.4 kg)		

High Performance Ratchet Cable Cutters



- Two-speed mechanism saves cutting time by closing the blades rapidly and shifting to normal speed to perform the cut.
- No more pushing on stubborn release buttons—the blades open automatically when the cut is complete.
- Completely new ratchet mechanism improves durability.
- Narrow profile permits use in deep boxes, against walls, or on floors.
- Durable, lightweight fiberglass handles.

CAT. NO.	UPC NO.	DESCRIPTION
773	01876	Hi Performance Ratchet Cable Cutter, 15-1/2"
774	01878	Hi Performance Ratchet Cable Cutter, 19-1/8"

SPECIFICATIONS

Capacity	Copper	Aluminum	Communications Cable
773			
Maximum	500 kcmil (MCM) (240 mm ²)	795 kcmil (MCM) (400 mm ²)	1-3/16" dia.
Frequent Use	350 kcmil (MCM) (150 mm ²)	750 kcmil (MCM) (400 mm ²)	
Length 15-1/2" (394 mm);	Weight 5.3 lbs. (2.4 kg)		
774			
Maximum	750 kcmil (MCM) (400 mm ²)	795 kcmil (MCM) (400 mm ²)	1-3/16" dia.
Frequent Use	500 kcmil (MCM) (240 mm ²)	750 kcmil (MCM) (400 mm ²)	
Length 19-1/8" (486 mm)	Weight 5.8 lbs. (2.6 kg)		

Heavy-Duty Ratchet Cable Cutters



- Extra thick blades, ground flat to reduce potential for breakage.
- Ratchet action for heavy-duty cutting.
- Two cutting actions – fast scissor cutting for small cable and insulation; converts automatically to ratchet mode.
- Anti-slip mechanism for positive ratchet action.
- Rubber boot protects ratchet mechanism.

CAT. NO.	UPC NO.	DESCRIPTION
756	34081	Heavy-Duty Ratchet Cable Cutter with rubber boot.
756U	38793	Heavy-Duty Ratchet Cable Cutter without rubber boot.
34188	34188	Cutter Head Unit (Includes 2 Blades)

SPECIFICATIONS

Capacity	Copper	Aluminum
Maximum	1500 kcmil (MCM) (800 mm ²)	1500 kcmil (MCM) (800 mm ²)
Frequent Use	1000 kcmil (MCM) (500 mm ²)	1000 kcmil (MCM) (500 mm ²)
Length 27-1/2" (698 mm) long,	Jaw opening 2" (51 mm)	
Weight 11.41 lbs. (5.17 kg)		

Ratchet ACSR/Cable Cutter



CAT. NO.	UPC NO.	DESCRIPTION
757	34084	Ratchet ACSR/Cable Cutter
757U	38794	Ratchet ACSR/Cable Cutter without rubber boot
34187	34187	Cutter Head Unit (Includes 2 Blades)

- Extra thick blades, ground flat to reduce potential for breakage.
- Ratchet action for increased cutting power.
- Two cutting actions – fast scissor cutting for small cable; converts automatically to ratchet mode.
- Anti-slip mechanism for positive ratchet action.
- Rubber boot protects ratchet mechanism.

SPECIFICATIONS

Capacity	954 kcmil (MCM) (477 mm ²) ACSR, 1/2" (12.7 mm) soft steel rod
Length	29-1/4" (743 mm), Jaw opening 1.18" (30 mm)
Weight	12.22 lbs. (5.54 kg)

EHS Guy Wire Cutter



CAT. NO.	UPC NO.	DESCRIPTION
758	01274	Heavy-Duty Ratchet Guy Wire Cutter
03548	03548	Cutter Head Unit (Includes Blades, Blade Holder, Insert and Hardware)

- Cuts 1/2" Extra High Strength (EHS) and standard guy wire.
- Cuts 1/2" (12.7 mm) mild steel rods and bolts.
- Has two cutting actions – single motion cutting for small cable. Ratchet action for heavy-duty cutting.
- Anti-slip mechanism for positive ratchet action.

SPECIFICATIONS

Capacity	1/2" EHS and standard Guy Wire, 1/2" Mild Steel Rods and Bolt.
Length	27-3/4" (704 mm).
Weight	10 lbs. 12 oz. (4.8 kg)

Guy Wire Cutter Dies



SPECIFICATIONS

Cutting Capacities

Guy Wire: 5/8 in. (16 mm) dia.	Ground Rod: 5/8 in. (16 mm) dia.
EHS Guy Wire: 5/8 in. (16 mm) dia.	Soft Steel Bolts: 5/8 in. (16 mm) dia.
Rebar (grade 60): 5/8 in. (16 mm) dia.	ACSR: 477 kcmil (MCM) (240 mm ²)

- Works with any crimping tool that accepts 12-ton "U" type dies.
- Less costly than dedicated cutting tools.
- Simple to install in crimping tools.
- Require no adjustments for cutting different materials.
- Will cleanly cut guy wire (including EHS), grade 60 rebar, ground rod, soft steel bolts up to 5/8" (16 mm) and up to 477 kcmil (MCM) (240 mm²) ACSR.
- Patent 5,775,158.

CAT. NO.	UPC NO.	DESCRIPTION
00949	00949	Cutting dies for 12-ton "U" die type crimping tools

Wire Cutter



CAT. NO.	UPC NO.	DESCRIPTION
1915	31892	Wire Cutter, 30-10 AWG (.08-6 mm ²)

Small, economical wire cutter that fits well in any tool belt.

- 30-10 AWG (.05-6 mm²) copper wire.
- Stamped and precision ground from high carbon tool steel.
- Heat-treated for long life.
- Return spring.
- Pivot joints have hardened steel bushings.
- Cushioned vinyl handle grip.
- Rust-resistant, black oxide finish.

SPECIFICATIONS

Capacity	30 - 10 AWG (.05mm ² - 6 mm ² *) copper wire
Length	5-1/2" (140 mm) Weight .2 lb. (90 g)

*Comparable Conductor

Cable Cutter



- Heavy-duty forged steel to cut copper or aluminum.
- Heat treated, precision ground, shear action curved cutting blades.
- Plastic coated, high leverage handles.
- Made in USA.
- Rust-resistant, black oxide finish.

SPECIFICATIONS

Capacity	Copper	Aluminum	Communications Cable
Maximum	2/0 (70 mm ²)		
Frequent Use	#1 AWG (35 mm ²)	2/0 (70 mm ²)	100 pair
Length	9-1/4" (235 mm)	Weight	1 lb. (.45 kg)

CAT. NO.	UPC NO.	DESCRIPTION
727	31291	Cable Cutter

Heavy-Duty Cable Cutters



718F, 704, 705, and 706

- Strong, lightweight fiberglass handles.
- Adjustable pivot bolt provides for blade adjustment.

704, 705, and 706

- Replaceable, forged, heat treated, and precision ground blades.
- Made in USA.

CAT. NO.	UPC NO.	DESCRIPTION
718F	10507	Heavy-Duty Cable Cutter
704	24564	Heavy-Duty Cable Cutter
705	05923	Heavy-Duty Cable Cutter
706	22291	Heavy-Duty Cable Cutter
24565	24565	704 Cutter Unit (Includes 2 Blades)
24567	24567	704 Handle Unit (Includes Handle, Sleeve, Grip)
06555	06555	705 Cutter Unit (Includes 2 Blades)
05930	05930	705 Handle Unit (Includes Handle, Sleeve, Grip)
22292	22292	706 Cutter Unit (Includes 2 Blades)
22296	22296	706 Handle Unit (Includes Handle, Sleeve, Grip)

SPECIFICATIONS

	718F	704	705	706
Length	17-1/2" (444 mm)	21" (533 mm)	25-1/2" (648 mm)	31-1/2" (800 mm)
Weight	2.8 lbs. (1.3 kg)	3.01 lbs. (1.37 kg)	5.5 lbs. (2.5 kg)	6.2 lbs. (2.8 kg)

CAPACITIES

Capacity	Copper	Aluminum	Communications Cable
718F			
Maximum	350 kcmil (MCM) (150 mm ²)		1" (25 mm) dia.
Frequent Use	4/0 AWG (95)	350 kcmil (MCM) (150 mm ²)	
704			
Maximum	350 kcmil (MCM) (150 mm ²)	500 kcmil (MCM) (240 mm ²)	1-1/4" (32 mm) dia.
Frequent Use	250 kcmil (MCM) (120 mm ²)	350 kcmil (MCM) (150 mm ²)	
705			
Maximum	500 kcmil (MCM) (240 mm ²)	1000 kcmil (MCM) (500 mm ²)	1-3/4" (44 mm) dia.
Frequent Use	350 kcmil (MCM) (150 mm ²)	750 kcmil (MCM) (400 mm ²)	
706			
Maximum	750 kcmil (MCM) (400 mm ²)	1000 kcmil (MCM) (500 mm ²)	1-1/2" (38 mm) dia.
Frequent Use	500 kcmil (MCM) (240 mm ²)	750 kcmil (MCM) (400 mm ²)	

Cable Cutter



CAT. NO.	UPC NO.	DESCRIPTION
718	30208	Cable Cutter

- Economical, lightweight, fits easily into tool boxes.
- Heat-treated, precision ground, shear action blades.
- Steel handles with rubber grips for leverage.
- Made in USA.

SPECIFICATIONS

Capacity	Copper	Aluminum
Maximum	350 kcmil (MCM) (150mm ²)	
Frequent Use	4/0 (95 mm ²)	350 kcmil (MCM) (150 mm ²)
Length	18" (457 mm)	Weight 2.78 lbs. (1.3 kg)

Heavy-Duty Communication Cable Cutter



- Forged and heat-treated blades specially designed for communications cable.
- Easily cuts cables up to 2-1/4" (57 mm) in diameter.
- Makes clean cuts with minimal distortion on lead-, rubber-, PVC- and polyethylene-sheathed cables.
- Blades and handles are replaceable in case of damage.
- Precision ground shear-type blades.
- Fiberglass handles with non-slip rubber grips.

CAT. NO.	UPC NO.	DESCRIPTION
765	06011	Heavy-Duty Communications Cutter

SPECIFICATIONS

Cutting Capacity	2-1/4" (57mm) Communications Cable (900 pair, 24 AWG)
Length	37" (940 mm)
Weight	7.2 lbs. (3.3 kg)

ACSR Cable Cutter



CAT. NO.	UPC NO.	DESCRIPTION
749	32913	Heavy-Duty Cable Cutter
34320	34320	Replacement Bolt & Nut Set

- Precision machined, forged steel blades.
- Cuts ACSR service entrance cable.
- Steel handles with rubber hand grips.

SPECIFICATIONS

Capacity	ACSR cable – 2/0, 7/16" (11.1 mm) piano wire – 1/8" (3.2 mm) copper/aluminum cable – 350 kcmil (MCM) (150 mm ²)
Length	28" (711 mm)
Weight	5.66 lbs. (2.6 kg)

Greenlee Crimping Tool Capacities

TOOL TYPE	4 TON	4.5 TON (4)	6 TON	12 TON DIE TYPE (5)	15 TON	ROTATING DIE (1)				QUAD-POINT DIELESS		DIELESS				
CONNECTOR TYPE	EK410	K4250 K425BG	EK22GL CK22GL ECCX CCCX HCCX RCCX	RK1230 HK1230 EK1230 CK1230 HKL1230	RK1240 HK1240 EK1240 CK1240	RK1550	K111	K05-1GL	K09-2GL	K09-3GL	RK06AT(C) HK06AT(C) EK06AT(C) CK06AT(C)	RK06FT HK06FT EK06FT CK06FT	1980	1989	1990	
	INDUSTRIAL															
	Copper Lugs	#8 - 250	#8 - 500	#8 - 600 (2)	#8 - 750	#8 - 750	#8 - 1000	#8 - 1	#8 - 1/0	#8 - 4/0	3/0 - 400	#6 - 500	#6 - 750	#8 - 4/0	#4 - 500	#4 - 1000
	Copper Splices	#8 - 250	#8 - 500	#8 - 600 (2)	#8 - 400	#8 - 750	#8 - 1000	#8 - 1	#8 - 1/0	#8 - 4/0	3/0 - 400	#6 - 500	#6 - 750	#8 - 4/0	#4 - 500	#4 - 1000
	Aluminum Lugs		#8 - 4/0	#8 - 300 (3)	#8 - 750	#8 - 750	#8 - 1000					#6 - 400	#6 - 750		#6 - 500	#6 - 1000
	Aluminum Splices		#8 - 4/0	#8 - 300 (3)	#8 - 400	#8 - 750	#8 - 1000					#6 - 400	#6 - 750		#6 - 500	#6 - 1000
Copper "C" Taps		#10 - #2	#12 - #2 (4)	#12 - 400	#12 - 400	#8 - 1000										
Aluminum "H" Taps				#6 - 500	#6 - 500	#6 - 1000										
Aluminum Pin Adapters		#6 - 1/0	#6 - 1/0 (3)	#6 - 500	#6 - 750	#6 - 750								#6 - 500	#6 - 750	
GROUNDING																
Ground Grid Connectors			#6 - #3 (4)	#6 - 500	#6 - 500	#6 - 500										
Copper "E" Taps				#6 - 500	#6 - 500	#6 - 500										
OVERHEAD																
5/8" Service Ent. Connectors	#10 - 1/0	#10 - 1/0	#10 - 1/0 (4)	#10 - 1/0	#10 - 1/0	#10 - 1/0					#8 - 1/0	#8 - 1/0				
.840 Service Ent. Connectors	1/0 - 4/0	1/0 - 4/0	1/0 - 4/0 (4)	1/0 - 4/0	1/0 - 4/0	1/0 - 4/0					#4 - 350	#4 - 350				
Aluminum "H" Taps		#6 - 4/0	#6 - 4/0 (4)	#6 - 500	#6 - 500	#6 - 900										
Copper "H" Taps		#10 - #2	#12 - #2 (4)	#12 - 4/0	#12 - 4/0	#12 - 4/0										
Copper Tension Splice		#6 - 2/0	#6 - 2/0 (4)	#6 - 500	#6 - 500	#6 - 500					#6 - 4/0	#6 - 4/0				
All Aluminum Tension Splice		#6 - 4/0	#6 - 4/0 (4)	#6 - 587.5	#6 - 587.5	#6 - 587.5										
One Piece ACSR Tension Splice		#4 - 1/0	#4 - 1/0 (4)	#4 - 556.5	#4 - 556.5	#4 - 556.5					#4 - 477	#4 - 477				
Two Piece ACSR Tension Splice		#2 - 477	#2 - 4/0 (4)	#2 - 556.5	#2 - 556.5	#2 - 900										
Aluminum Jumper Splice		#4 - 2668	#4 - 266.8 (4)	#4 - 556.5	#4 - 556.5	#4 - 795										
Stirrups		#2 - 4/0	#6 - 4/0 (4)	#6 - 500	#6 - 500	#6 - 500										
Aluminum Lugs		#2 - 1/0	#4 - 4/0 (4)	#4 - 556.5	#4 - 556.5	#4 - 795										
Copper Lugs		#6 - 1/0	1/0 - 2/0 (4)	1/0 - 500	1/0 - 500	1/0 - 500										

NOTES: (1) Die wheels are rotated to match the cable size. Dies are color coded and marked with the cable size.
 (2) Capacity using Greenlee K-22 dies.
 (3) Capacity using Greenlee KA22 dies.
 (4) Capacity using "W" dies.
 (5) Capacity using "U" dies.

Manual Crimping Tool



- Designed for crimping a wide range of overhead service entrance connections, overhead splices, and overhead taps.
- Easy to use MD-6 type "pop" tool.
- Equipped with D₃ die groove and either "BG" or "O" die groove.
- The D₃ die groove serves as a die seat for all Greenlee and industry "W" type dies.
- Bent fiberglass handles provide a solid grip, good leverage, and better durability than wood.
- Teflon impregnated bushings at pivot joints provide smooth operation and long life.
- Complete crimps are assured with an over-center cam mechanism.
- Tool can easily be checked visually for proper adjustment, and can be adjusted with Allen wrenches.

CAT. NO.	UPC NO.	DESCRIPTION
K425O	02064	Crimping Tool with D ₃ and O die grooves
K425BG	02065	Crimping Tool with D ₃ and BG die grooves

SPECIFICATIONS

Capacity	See capacity chart above
Crimping Force	9,000 lb. (40 kN)
Length	25-3/8" (645 mm)
Weight	7.1 lbs. (3.2 kg)

Gator-Plus™ Battery-Powered 4-Ton Crimping Tools



EK410



- New breakthrough hydraulic pump design results in an extremely compact battery-powered crimping tool with capacity to 250 kcmil (MCM) copper color-coded connectors. Also crimps 5/8 and 840 service entrance connectors.
- Special compact 9.6 volt Ni-Cd battery reduces weight and size.
- Slim profile and light weight provide for one-hand operation.
- Can complete approximately 85 crimps per battery charge with 4/0 copper connectors.
- Ram automatically retracts to signal that crimp is complete.
- Ram can be retracted in mid-cycle to adjust connector.
- Flip-open crimping head rotates 360°.
- UL and cUL Classified with Anderson, Blackburn, Burndy, ILSCO, Panduit, Penn-Union, and Thomas & Betts **copper** color-coded code connectors.
- Includes two batteries, battery charger, and molded carrying case.
- Choice of 120 volt, 230 volt, or 12 volt battery charger.

CAT. NO.	UPC NO.	DESCRIPTION
EK41011	02033	4-Ton Battery-Powered Crimping Tool, 120 V Charger
EK41012	02034	4-Ton Battery-Powered Crimping Tool, 12 V Charger
EK41022	02035	4-Ton Battery-Powered Crimping Tool, 230 V Charger

Crimping Dies shown below.

SPECIFICATIONS

Capacity	#8 AWG to 250 kcmil (MCM) copper color-coded connectors 5/8 service entrance connectors 840 service entrance connectors
Crimping Force	7,900 lb. (35 kN)
Length	14" (356 mm)
Width	3-1/8" (79 mm)
Weight	3.6 lbs. (1.6 kg)
Crimp Cycle Time	~4 seconds
Battery	9.6 volt 1.3 Ah Ni-Cd battery
Battery Charge Time	1 Hour

Crimping Dies for 4-Ton EK410 Tools



KC4 DIES FOR SERVICE ENTRANCE CONNECTORS

CAT. NO.	UPC NO.	DESCRIPTION
KC4-10	02021	Crimping Dies for 5/8" Service Entrance Connectors
KC4-840	02022	Crimping Dies for 840 Service Entrance Connectors

4-TON CRIMPING DIE KIT*

CAT. NO.	UPC NO.	DESCRIPTION
KC4CU	02037	Complete Die Set for copper connector. Includes dies for #8 to 250 kcmil (MCM) copper connectors (dies can be stored in tool carrying case).

DIES FOR CRIMPING COLOR-CODED COPPER LUGS & SPLICES*

CAT. NO.	UPC NO.	COPPER CABLE SIZE	COLOR CODE
KC4-8	02075	8 AWG	Red
KC4-6	02076	6 AWG	Blue
KC4-4	02077	4 AWG	Gray
KC4-2	02078	2 AWG	Brown
KC4-1	02079	1 AWG	Green
KC4-1/0	02080	1/0 AWG	Pink
KC4-2/0	02081	2/0 AWG	Black
KC4-3/0	02082	3/0 AWG	Orange
KC4-4/0	02083	4/0 AWG	Purple
KC4-250	02084	250 kcmil (MCM)	Yellow

*Note: Connections are UL and cUL classified for copper when used with Anderson, Blackburn, FCI Burndy, ILSCO, Panduit, Thomas & Betts and Penn-Union color-coded lugs and splices.

Gator-Plus™ Battery-Powered 6-Ton Crimping Tools



EK22GL11

- Ram automatically retracts after the crimp is complete. Operator doesn't need to push a retract lever.
- A two-speed pump advances the ram quickly to start the crimp. Crimp times range from about 5 to 7 seconds depending on the connector.
- Powerful 12 volt 2.0 Ah battery provides up to 120 crimps per charge.
- UL Classified and CSA Certified with Anderson, Blackburn, Burndy, ILSCO, Panduit, Penn-Union and T&B **copper** lugs and splices to 600 kcmil (MCM). UL & CUL classified with Anderson, Blackburn, Burndy, ILSCO, Panduit, Penn-Union, & Thomas & Betts **aluminum** lugs & splices to 350 kcmil (MCM).
- Flip-top style opens easily with a simple pull on the side piece and rotates 360°.
- Includes one-hour battery charger, steel carrying case and two batteries.
- Choice of a 120 volt, 230 volt, or 12 volt battery charger.
- Equipped with die adapters for "W" type dies. The adapters are equivalent to "D₃" dies.
- U.S. Patent #6,206,663.

SPECIFICATIONS

Capacity Color-coded copper lugs and splices, 600 kcmil (MCM). Color-coded aluminum lugs and splices, 350 kcmil (MCM). For capacity with other types of connectors, see chart on page 157.

Crimping Force 12,000 lb (53 kN) **Length** 12-3/8" (314 mm)

Height 11-3/4" (298 mm) **Weight** 9.7 lbs. (4.4 kg)

Battery 12 Volt 2.0 Ah NiCd **Battery charge time** 1 hour

CAT. NO.	UPC NO.	DESCRIPTION
EK22GL11	03551	6-Ton Battery-Powered Crimping Tool, 120 V Charger
EK22GL12	03552	6-Ton Battery-Powered Crimping Tool, 12 V Charger
EK22GL22	03553	6-Ton Battery-Powered Crimping Tool, 230 V Charger

Crimping Dies on page 170.

Gator-Plus™ 6-Ton Corded Crimping Tools



- Operates directly from 120 volt or 230 volt 50 Hz electrical outlets. No need to charge batteries or worry about running out of power.
- Equipped with 15 foot (5 m) cord. Can be used with extension cords.
- Ram automatically retracts after the crimp is complete. Operator doesn't need to push a retract lever.
- A two-speed pump advances the ram quickly to start the crimp. Crimp completion time is reduced by over 25%. Crimp times range from about 5 to 7 seconds depending on the connector.
- UL Classified and CSA Certified with Anderson, Blackburn, Burndy, ILSCO, Panduit, Penn-Union and T&B **copper** lugs and splices to 600 kcmil (MCM). UL & CUL classified with Anderson, Blackburn, Burndy, ILSCO, Panduit, Penn-Union, & Thomas & Betts **aluminum** lugs & splices to 350 kcmil (MCM).
- Flip-top style opens easily with a simple pull on the side piece and rotates 360°.
- Equipped with die adapters for "W" type dies. The adapters are equivalent to "D₃" dies.
- Includes steel carrying case.
- U.S. Patent #6,206,663.

SPECIFICATIONS

Capacity Color-coded copper lugs and splices, 600 kcmil (MCM). Color-coded aluminum lugs and splices, 350 kcmil (MCM). For capacity with other types of connectors, see chart on page 176.

Crimping Force 12,000 lb. (53 kN) **Height** 11-3/4" (298 mm)

Length 12-3/8" (314 mm) **Weight** 9.7 lbs. (4.4 kg)

CAT. NO.	UPC NO.	DESCRIPTION
CK22GL11	01368	6-Ton Corded Crimping Tool, 120 V
CK22GL22	01369	6-Ton Corded Crimping Tool, 230 V

Gator-Plus™ 12-Ton Battery-Powered Crimping Tools



EK1230



EK1240



EK1240K



EK1240C

- Three crimping head choices: EK1230 for industry "U" type dies with 1.20" (30 mm) opening, EK1240 for industry "U" type dies with 1.65" (42 mm) opening, and EK1240K for Kearney PH2 type dies.
- New head designs result in lower weight and improved durability – tested to 50,000 crimp cycles.
- Two-speed pump to reduce cycle time.
- Ram automatically retracts when crimp cycle is complete – a Greenlee exclusive.
- Crimping heads rotate 360°.
- Covered head models have two layers of PVC that total approximately 3/16" (4.8 mm) thick. The outer layer is black and the inner layer is red.
- Powerful 12 volt 2.0Ah battery provides up to 35 crimps per charge.
- Includes one-hour battery charger, steel carrying case, and two batteries.
- U.S. Patent 6,206,663.

CAT. NO.	UPC NO.	DESCRIPTION
EK123011	06429	12-Ton Battery-Powered Crimping Tool, 1.2" (30 mm) opening, 120 V Charger
EK123012	06431	12-Ton Battery-Powered Crimping Tool, 1.2" (30 mm) opening, 12 V Charger
EK123022	06432	12-Ton Battery-Powered Crimping Tool, 1.2" (30 mm) opening, 230 V Charger
EK1230C11	07190	12-Ton Battery-Powered Crimping Tool, 1.2" (30 mm) opening, PVC covered, 120 V Charger
EK1230C12	07191	12-Ton Battery-Powered Crimping Tool, 1.2" (30 mm) opening, 12 V Charger
EK1230C22	07192	12-Ton Battery Powered Crimping Tool, 1.2" (30 mm) opening, PVC covered, 230 V Charger
EK124011	06436	12-Ton Battery-Powered Crimping Tool, 1.65" (42 mm) opening, 120 V Charger
EK124012	06437	12-Ton Battery-Powered Crimping Tool, 1.65" (42 mm) opening, 12 V Charger
EK124022	06439	12-Ton Battery-Powered Crimping Tool, 1.65" (42 mm) opening, 230 V Charger
EK1240C11	07193	12-Ton Battery-Powered Crimping Tool, 1.65" (42 mm) opening, PVC covered, 120 V Charger
EK1240C12	07194	12-Ton Battery-Powered Crimping Tool, 1.65" (42 mm) opening, PVC covered, 12 V Charger
EK1240C22	07195	12-Ton Battery-Powered Crimping Tool, 1.65" (42 mm) opening, PVC covered, 230 V Charger
EK1240K11	06443	12-Ton Battery-Powered Crimping Tool, Kearney head, 120 V Charger
EK1240K12	06444	12-Ton Battery-Powered Crimping Tool, Kearney head, 12 V Charger
EK1240K22	06445	12-Ton Battery-Powered Crimping Tool, Kearney head, 230 V Charger
EK1240KC11	07196	12-Ton Battery-Powered Crimping Tool, Kearney Head, PVC covered, 120 V Charger
EK1240KC12	07197	12-Ton Battery-Powered Crimping Tool, Kearney Head, PVC covered, 12 V Charger
EK1240KC22	07198	12-Ton Battery-Powered Crimping Tool, Kearney Head, PVC covered, 230 V Charger

SPECIFICATIONS

Capacity	EK1230 & EK1240 – See crimping tool capacity chart on page 157; EK1240K – ASCR terminals 1033 kcmil (MCM), ASCR tension fittings 477 kcmil (MCM)
Crimping Force	24,000 lb (106 kN)
Length	EK1230 – 14-5/8" (371 mm); EK1240 – 15-1/4" (387 mm); EK1240K – 15-3/4" (398 mm)
Weight	EK1230 – 14.1 lbs (6.4 kg); EK1240 & EK1240K – 14.9 lbs. (6.8 kg)

Crimping Dies on page 171.

Gator-Plus™ 12-Ton Corded Crimping Tools



- Operates directly from 120 volt or 230 volt electrical outlets. No need to charge batteries or worry about running out of power.
- Equipped with 15 foot (5 m) cord. Can be used with extension cords.
- Two crimping head choices: CK1230 for industry "U" type dies with 1.20" (30 mm) opening, and CK1240 for industry "U" type dies with 1.65" (42 mm) opening.
- New head designs result in lower weight and improved durability – tested to 50,000 crimp cycles.
- Two-speed pump to reduce cycle time.
- Ram automatically retracts when crimp cycle is complete – a Greenlee exclusive.
- Crimping heads rotate 360°.
- Includes steel carrying case.

CAT. NO.	UPC NO.	DESCRIPTION
CK123011	01370	Corded 12-Ton Crimping Tool, 1.2" (30 mm) opening, 120 V
CK123022	01372	Corded 12-Ton Crimping Tool, 1.2" (30 mm) opening, 230 V
CK124011	01373	Corded 12-Ton Crimping Tool, 1.65" (42 mm) opening, 120 V
CK124022	01374	Corded 12-Ton Crimping Tool, 1.65" (42 mm) opening, 230 V

SPECIFICATIONS

Capacity	EK1230 & EK1240 – See crimping tool capacity chart on page 157
Crimping Force	24,000 lb (106 kN)
Length	CK1230: 14-5/8" (371 mm); CK1240: 15-1/4" (387 mm)
Weight	CK1230: 14.1 lbs (6.4 kg); CK1240: 14.9 lbs (6.8 kg)

12-Ton Manual Hydraulic Crimping Tools



HK1230



HK1240



HK1240K



HK1240KC

- Three crimping head choices: HK1230 for industry "U" type dies with 1.20" (30 mm) opening, HK1240 for industry "U" type dies with 1.65" (42 mm) opening, and HK1240K for Kearney PH2 type dies.
- New head designs result in lower weight and improved durability – tested to 50,000 crimp cycles.
- Two-speed pump to reduce cycle time.
- Ram automatically retracts when crimp cycle is complete – a Greenlee exclusive.
- Crimping heads rotate 360°.
- Smaller and lighter than competitive tools.
- Covered head models have two layers of PVC that total approximately 3/16" (4.8 mm) thick. The outer layer is black and the inner layer is red.
- Includes steel carrying case.
- U.S. Patent #6,206,663.

CAT. NO.	UPC NO.	DESCRIPTION
HK1230	06426	12-Ton Hydraulic Crimping Tool, 1.2" (30 mm) opening
HK1230C	07199	12-Ton Hydraulic Crimping Tool, 1.2" (30 mm) opening, PVC covered
HK1240	06427	12-Ton Hydraulic Crimping Tool, 1.65" (42 mm) opening
HK1240C	07202	12-Ton Hydraulic Crimping Tool, 1.65" (42 mm) opening, PVC covered
HK1240K	06428	12-Ton Hydraulic Crimping Tool, Kearney head
HK1240KC	07203	12-Ton Hydraulic Crimping Tool, Kearney head, PVC covered

Crimping Dies on page 171.

SPECIFICATIONS

Capacity	HK1230 & HK1240 – See crimping tool capacity chart on pg. 157; HK1240K – ASCR terminals 1033 kcmil (MCM), ASCR tension fittings 477 kcmil (MCM)
Crimping Force	24,000 lbs (106 kN)
Length	HK1230 – 20-3/8" (518 mm); HK1240 – 21-1/2" (546 mm); HK1240K – 22" (557 mm)
Weight	HK1230 – 12.2 lbs (5.5 kg); HK1240 & HK1240K – 13.2 lbs. (6.0 kg)

12-Ton Manual Hydraulic Crimping Tool



- Two-speed ram advances fast and shifts to lower speed to complete the crimp.
- Strong, lightweight fiberglass handles.
- Push button permits dies to be inserted and removed easily.
- The "C" style head has a 1.2" (30 mm) opening for easy placement on connectors.
- Tool is supplied in a durable molded plastic carrying case.
- Accepts Greenlee and industry "U" style dies for 12-ton tools.
- Includes molded carrying case.

CAT. NO.	UPC NO.	DESCRIPTION
HKL1230	01760	12-Ton Hydraulic Crimping Tool, 1.2" (30 mm) opening

Crimping Dies on page 171.

SPECIFICATIONS

Capacity	See crimping tool capacity chart on page 157.
Crimping Force	24,000 lbs (106 kN)
Length	24-1/4" (616 mm)
Weight	14.1 lbs (6.4 kg)

12-Ton Remote-Powered Crimping Heads



RK1230



RK1240



RK1240K



RK1240C

- Three crimping head choices: RK1230 for industry "U" type dies with 1.20" (30 mm) opening, RK1240 for industry "U" type dies with 1.65" (42 mm) opening, and RK1240K for Kearney PH2 type dies.
- New head designs result in lower weight and improved durability – tested to 50,000 crimp cycles.
- Boss included on each crimping head for use with hotsticks.
- Easy to get into tight locations, lightweight makes them excellent choices for hotstick use.
- Single-acting tools that require an external hydraulic pump capable of 10,000 psi (700 bar).
- Equipped with a 3/8" male screw type coupler.
- Capable of crimping a wide range of lugs, C-taps, H-taps and overhead tension sleeves.
- Covered head models have two layers of PVC that total approximately 3/16" (4.8 mm) thick. The outer layer is black and the inner layer is red.
- Includes steel carrying case.
- See page 333 for hydraulic hose and pump selection.

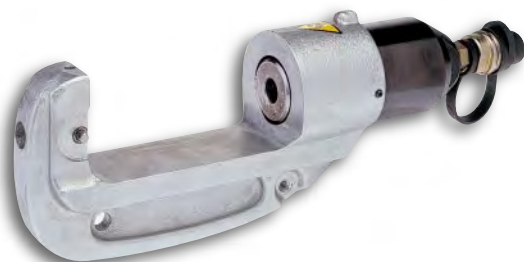
CAT. NO.	UPC NO.	DESCRIPTION
RK1230	05350	12-Ton Remote-Powered Crimping Head, 1.2" (30 mm) opening
RK1230C	07204	12-Ton Remote-Powered Crimping Head, 1.2" (30 mm) opening, PVC covered
RK1240	05351	12-Ton Remote-Powered Crimping Head, 1.65" (42 mm) opening
RK1240C	07205	12-Ton Remote-Powered Crimping Head, 1.65" (42 mm) opening, PVC covered
RK1240K	05352	12-Ton Remote-Powered Crimping Head, Kearney head
RK1240KC	07207	12-Ton Remote-Powered Crimping Head, Kearney head, PVC covered

Crimping Dies on page 171.

SPECIFICATIONS

Capacity	RK1230 & RK1240 – See crimping tool capacity chart on pg. 157; RK1240K – ASCR terminals 1033 kcmil (MCM), ASCR tension fittings 477 kcmil (MCM)
Crimping Force	24,000 lbs (106 kN)
Length	RK1230 – 10-3/4" (273 mm); RK1240 – 11-7/8" (302 mm); RK1240K – 12-1/4" (311 mm)
Weight	RK1230 – 8.7 lbs (3.9 kg); RK1240 & RK1240K – 9.7 lbs. (4.4 kg)
Max. Operating Pressure	10,000 psi (700 bar)

15-Ton Crimping Tool



- Interchangeable adapters permit the use of a wide variety of die types for all common crimping applications.
- Accepts Kearney PH4/PH14 dies without adapters.
- Lightweight.
- Zinc-plated head resists corrosion better than other finishes.
- Hot stick attachment point is standard.
- Operates with most 10,000 psi (700 bar) hydraulic sources.
- Equipped with 3/8" male screw type 10,000 psi (700 bar) coupler.
- Includes steel carrying case.
- See page 333 for hydraulic hose and pump selection.

CAT. NO.	UPC NO.	DESCRIPTION
RK1550	05386	15-Ton Single-Acting Remote-Powered Crimping Tool
48820	48820	Die Adapters – Burndy P dies (Y46), IlSCO ILD-P dies
48788	48788	Die Adapters – T&B 15600 dies, Blackburn 15600 dies
48802	48802	Die Adapters – Greenlee U dies, Burndy U dies, IlSCO ILD dies, T&B 15500 dies, Blackburn 15500 dies
48824	48824	Die Adapters – Kearney PH2/WH2 dies

SPECIFICATIONS

Capacity	Color-Coded copper lugs and splices: #8 to 1000 kcmil (MCM) Color-Coded aluminum lugs and splices: #8 to 1000 kcmil (MCM) For other connector types, see the capacity chart in the Greenlee catalog
Crimping Force at 10,000 psi (700 bar)	30,000 lbs (133 kN)
Length	15" (380 mm);
Width	3" (76 mm)
Height	5-3/8" (135 mm)
Weight	14.1 lbs. (6.4 kg)
Operating Pressure	10,000 psi (700 bar)

Crimping Tool 8-1 AWG



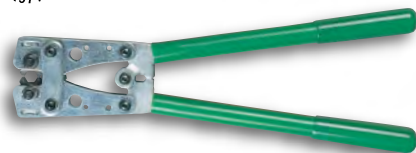
- Small size and lightweight make this an ideal tool for crimping small lugs and splices.
- Easily fits in tool pouches.
- Full-cycle mechanism assures that crimps are complete.
- Jaws can be opened in mid-cycle if necessary to adjust connector.
- Wide grips make crimping easy on the hands.
- UL and cUL classified with Anderson, Blackburn, Burndy, ILSCO, Panduit, Penn-Union, and Thomas & Betts **copper** color-coded code connectors.

SPECIFICATIONS

Capacity	8 AWG - 1 AWG copper color-coded connectors
Length	10" (273 mm)
Weight	1.4 lbs. (0.6 kg)

CAT. NO.	UPC NO.	DESCRIPTION
K111	10763	Crimping Tool

K-Series Crimping Tool 8-1/0 AWG



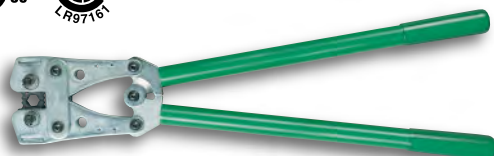
- Crimps smaller copper connectors.
- UL classified and CSA certified with Anderson, Blackburn, Burndy, ILSCO, Panduit, Thomas & Betts and Penn-Union copper connectors.
- Small, lightweight, easy to handle.
- Easy to get in tight locations.
- Color-coded, hexagonal rotating dies.

SPECIFICATIONS

Capacity	8 AWG - 1/0 AWG Copper
Length	15.4" (390 mm)
Weight	2.4 lbs. (1.1 kg)

CAT. NO.	UPC NO.	DESCRIPTION
K05-1GL	02624	Crimping Tool
K05-1SPGL	02625	Crimping Tool, full cycle mechanism

K-Series Crimping Tool – 8-4/0 AWG



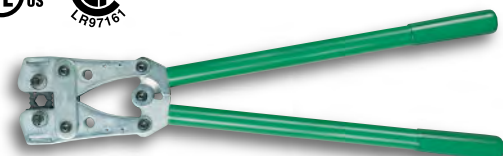
- UL classified and CSA certified with Anderson, Blackburn, Burndy, ILSCO, Panduit, Thomas & Betts and Penn-Union copper connectors.
- Crimps all the popular small to mid-range copper connector sizes.
- Long length results in low handle efforts.
- Color-coded, hexagonal rotating dies.

SPECIFICATIONS

Capacity	8 AWG - 4/0 AWG Copper
Length	25.5" (650 mm)
Weight	6.4 lbs. (2.9 kg)

CAT. NO.	UPC NO.	DESCRIPTION
K09-2GL	02628	Crimping Tool
K09-2SPGL	02629	Crimping Tool, full cycle mechanism

K-Series Crimping Tool 3/0-400



- UL classified and CSA certified with Anderson, Blackburn, Burndy, ILSCO, Panduit, Thomas & Betts and Penn-Union copper connectors.
- Crimps the larger copper connector sizes all the way to 400 kcmil (MCM).
- Color-coded, hexagonal rotating dies.

SPECIFICATIONS

Capacity	3/0 AWG - 400 kcmil (MCM) Copper
Length	25.5" (650 mm)
Weight	6.4 lbs. (2.6 kg)

CAT. NO.	UPC NO.	DESCRIPTION
K09-3GL	02630	Crimping Tool

Gator-Plus™ Battery-Powered Quad-Point Dieless Crimping Tools*



EK06FT



EK06AT

- Utilizes four indentors to make the crimp.
- Two-speed pump advances the ram quickly to start the crimp, reducing crimp completion time. The ram automatically retracts after the crimp is complete.
- Lightweight, featuring an angled pistol grip and a 360° rotating head.
- Flip-top style uses a pull pin to open head for easy removal from the connector.
- Includes two batteries, battery charger, steel carrying case, test gauge and test slugs.
- Choice of a 120 volt, 230 volt, or 12 volt one-hour battery charger.
- U.S. Patent 6,206,663.

CAT. NO.	UPC NO.	DESCRIPTION
EK06AT11	06069	Quad-Point Battery-Powered Crimping Tool, Open Head Dieless, 120 V Charger
EK06AT12	06070	Quad-Point Battery-Powered Crimping Tool, Open Head Dieless, 12 V Charger
EK06AT22	06071	Quad-Point Battery-Powered Crimping Tool, Open Head Dieless, 230 V Charger
EK06ATC11	06203	Quad-Point Battery-Powered Crimping Tool, Open Rubber Covered Head Dieless, 120 V Charger
EK06ATC12	06204	Quad-Point Battery-Powered Crimping Tool, Open Rubber Covered Head Dieless, 12 V Charger
EK06ATC22	06206	Quad-Point Battery-Powered Crimping Tool, Open Rubber Covered Head Dieless, 230 V Charger
EK06FT11	06072	Quad-Point Battery-Powered Crimping Tool, Flip-Top Head Dieless, 120 V Charger
EK06FT12	06073	Quad-Point Battery-Powered Crimping Tool, Flip-Top Head Dieless, 12 V Charger
EK06FT22	06074	Quad-Point Battery-Powered Crimping Tool, Flip-Top Head Dieless, 230 V Charger

*FT tools are UL and cUL classified with #4AWG – 750 kcmil (MCM) **copper** color-coded connectors and #6AWG – 750 kcmil (MCM) **aluminum** color-coded connectors of the following brands: Anderson, Blackburn, FCI Burndy, IlSCO, Panduit, Penn-Union, and Thomas & Betts.

AT tools are UL and cUL classified with #4 – 500 kcmil (MCM) copper color-coded connectors ...of the following brands: Anderson, Blackburn, FCI Burndy, ILSCO, Panduit, Penn-Union, & Thomas & Betts.

SPECIFICATIONS

Capacity

See crimping tool capacity chart on page 157.

Length EK60AT – 14 in. (355 mm), EK60FT – 14-7/8 in. (378 mm)

Weight EK60AT – 11.1 lbs. (5.0 kg), EK60FT – 10.8 lbs. (4.9 kg)

Battery Voltage 12V; **Battery Charge Time** 1 hour