



Ramset™

Concrete Results™

www.itwasia.com



SPIT FIX II
Stud Anchor

Spit Fix II stud anchor is a true to size, torque controlled expansion anchor with “pull down” capabilities for permanent anchoring into solid substract such as concrete.



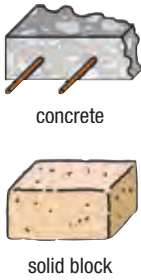
FEATURES

- New expansion sleeve
- 3 legs for a better expansion
- 6 lugs for a better fixing in concrete
- zinc-coated expansion sleeve (high quality)
- Improved efficiency
- 25% less hammer blows to install the anchor
- 20% less turns of the spanner to achieve full torque

New description

diameter x total length / maximum thickness of fixture
Example : FIX II 8x70/20

MATERIALS



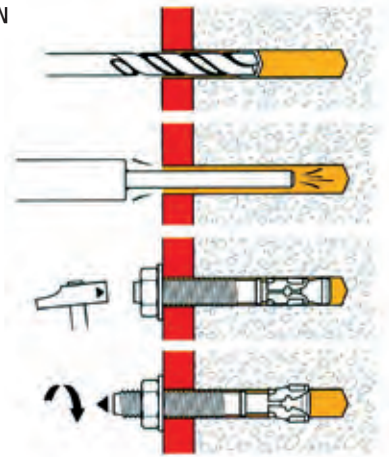
- For non-cracked concrete
 - conform to ETA

(European Technical Approval)

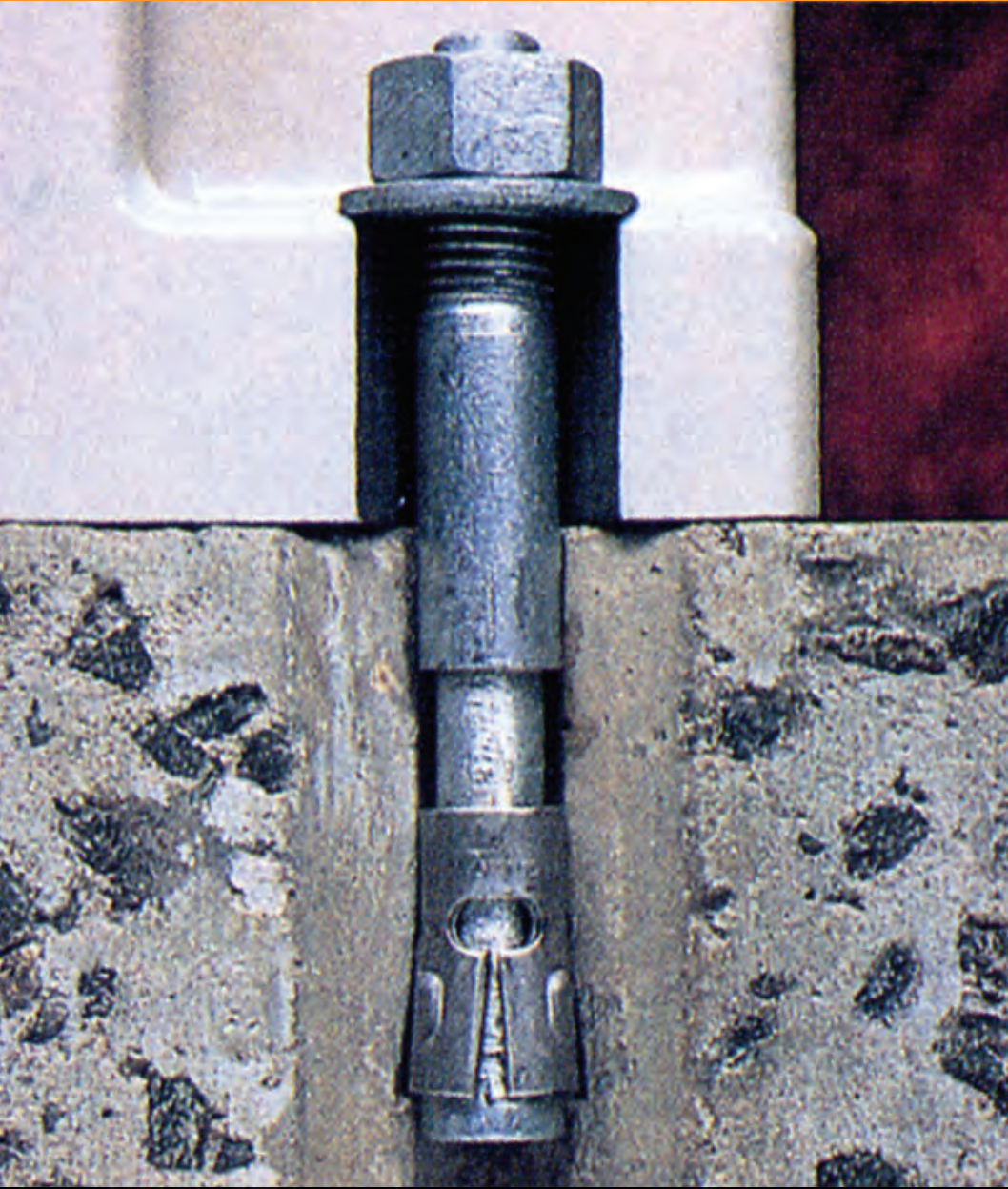
option 7: higher level for non-cracked concrete



INSTALLATION



- a Drill the hole to the required depth.
- b Blow out the trapped dust.
- c Hammer and install the anchor in hole.
- d Apply tightening torque with torque wrench according to the diameter of anchor.



APPLICATIONS



Pre-cast panels are typically anchored to the concrete slab temporarily with Spit Fix anchors because of reliable performance and economical pricing.



Safety railings are commonly anchored with Spit Fix anchors because of availability in three material types for all corrosive atmospheres.



Anchoring machinery and conveyors is a common Spit Fix anchor application. Spit Fix is fully threaded to allow a large range of embedment and fixture thickness.

ANCHOR SIZE (mm)	INSTALLATION DETAILS								MINIMUM DIMENSIONS			RECOMMENDED LOAD (KN)				PART NO.		
	Anchor length, L (mm)	For fixtures up to, t _{fix} (mm)	Thread dia, d	Hole diameter, d _o (mm)	Min. anchor depth (mm)	Hole depth, h _L (mm)	Fixture hole diameter, d _f (mm)	Tight torque, T _{inst} (Nm)	Edge Distance C _{min} (mm)	Anchor spacing, S _{min} (mm)	Substrate thickness, h _{min} (mm)	Shear V _{rec} >C20/25 _	Tension, N _{rec}			Zinc Plated	Stainless Steel A4	Hot-dipped Galvanised
													Concrete compressive strength, f _b					
													25MPa	30MPa	37MPa			
M8x55/5-0	55	—	M8	8	48	55	9	15	60	50	100	2.7	6.6	7.3	8.1	T08055	T0805SS	
M8x70/20-7	70	7														T08070	T08070SS	
M8x90/40-27	90	27														T08090	T08090SS	T08090GH
M8x130/80-67	130	67														T08130	T08130SS	
M10x65/5-0	65	—	M10	10	52	60	12	30	65	55	104	8.0	7.5	8.3	9.2	T10065	T10065SS	
M10x75/15-5	75	5														T10075	T10075SS	
M10x95/36-26	95	26														T10095	T10095SS	T10095GH
M10x120/60-50	120	50														T10120	T10120SS	
M10x140/80-70	140	65	M12	12	68	78	14	50	75	75	136	13.0	11.2	12.3	13.7	T10140		
M12x80/5-0	80	—														T12080	T12080SS	
M12x100/25-8	100	8														T12100	T12100SS	T12100GH
M12x115/40-23	115	23														T12115	T12115SS	
M12x140/65-48	140	48	M16	16	86	100	18	100	100	90	172	13.5	15.9	17.5	19.4	T12140	T12140SS	T12140GH
M16x100/5-0	100	—														T16100		
M16x125/30-8	125	8														T16125	T16125SS	
M16x150/55-33	150	33														T16150	T16150SS	
M16x170/75-53	170	53	M20	20	100	115	22	160	125	105	200	35.0	20.0	22.0	24.4	T16170	T16170SS	T16170GH
M20x120/10-0	120	—														T20120		
M20x160/50-25	160	25														T20160		
M20x215/105-80	215	80														T20215		

Recommended Tension Load, N_{rec} (Factor of Safety on Load is 1.4 and on the Concrete is 1.8)
Recommended Shear Load, V_{rec} (Factor of Safety on the Steel is 1.4)

Applications & Projects:



External cladding and steel structure were installed using Ramset anchors for Republic Polytechnic.



More than 100,000 pieces of stainless steel Ramset anchors were used for the external cladding of Monetary Authority of Singapore Building.



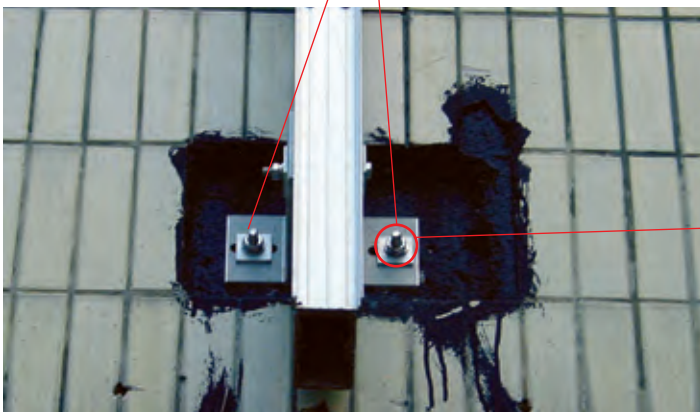
Ramset Anchors were used for the facade cladding of laminated marble glass veneer of The Supreme Court.



Mount Elizabeth Hospital & Medical Centre: before



Mount Elizabeth Hospital & Medical Centre: after



Brackets were installed using Ramset anchors for external cladding works of Mount Elizabeth Hospital & Medical Centre.



ITW Asia (Pte) Ltd

8 Kaki Bukit Road 2, #02-34, Ruby Warehouse Complex. Singapore 417841
Tel: +65 67461177 Fax: +65 67461482 Website: www.itwasia.com